



5865 Forbes Avenue / 2nd Floor
Pittsburgh, PA 15217

First Class Mail
U.S. POSTAGE
PAID
Pittsburgh, PA
Permit 732

Complete Ice Cream Plant Auction

Ellsworth Ice Cream
Tuesday, October 7 at 10:00 am



COMPLETE ICE CREAM PRODUCTION PLANT AUCTION

SECURED PARTY SALE

Ellsworth Ice Cream – Saratoga Springs, NY – Tuesday, October 7 at 10:00 am



Breddo 300 Gallon SIS Liquifier



Overview of Mix System and Batch Room



8-Wide Vitaline



(2) WCB 3-Barrel Ice Cream Freezer

Ellsworth Ice Cream • Saratoga Springs, NY

COMPLETE ICE CREAM PRODUCTION PLANT AUCTION

SECURED PARTY SALE

Tuesday, October 7 at 10:00 am

ELLSWORTH ICE CREAM TUESDAY, OCTOBER 7, 2008 AT 10:00 A.M.

Ellsworth Ice Cream is an ice cream and novelty plant located in beautiful Saratoga Springs, NY. This secured party sale is equipped with Stick Novelty Lines, Ice Cream Freezers, Ingredient Feeder, Fillers, Flavor Tanks, Processors and Mix Tanks, Liquifiers, Tanks, Packaging and Material Handling, Refrigeration System, Air Compressors, Boilers, S/S Pipes, Pumps and Line Items, Trailers, Maintenance Shops, General Plant, Spare Parts and Much More.

Sale Site Address: 120 Division Street, Saratoga Springs, NY 12866

Directions: Only 28 miles from Albany International Airport. Follow I-87N. Merge onto US-9N toward Saratoga Springs. Turn left on Division Street.

Inspection: October 6

ONLINE BIDDING: Available through Bidspotter. Visit mdavisgrp.com or harrydavis.com or call 412.521.5751 or 412.765.1170 for details.

TERMS: A 10% BUYER'S PREMIUM APPLIES TO ALL SALES (13% for successful online bids). Full payment day of sale in guaranteed or certified U.S. FUNDS. Company check accepted with letter of approval from your bank. Direct wire transfers to the escrow account of M. Davis Group, LLC accepted ONLY with prior arrangement. You are urged to inspect before the sale. Removal of items by designated insured riggers only. Although information has been obtained from reliable sources, the Auctioneer makes no warranty or guarantee, express or implied as the accuracy of information in this brochure. Check our web site for updates. Additional terms to be announced at the auction sale.

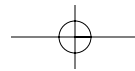


412.521.5751 mdavisgrp.com

The NEW Leader in Food & Dairy Auctions
5865 Forbes Avenue / 2nd Floor
Pittsburgh, PA 15217
©2008 M. Davis Group



1725 Boulevard of the Allies
Pittsburgh, PA 15219
(800) 775.2289
harrydavis.com



M. Davis Group

412.521.5751 mdavisgrp.com

(4) STICK NOVELTY LINES

2001 WCB Installation Vitaline 16-Wide Novelty Line Complete with Flavor Feed Hoppers, Mold Set, Stormax Model PMD150 Stick Inserter, Stacker, Model ST05, S/N 10699, WCB Wrapper, Model WA08, S/N 106599, Mastercraft Model CM5 Carton Machine, & Controls.

Alliance Vitaline 8-Wide Novelty Line with Flavor Feed Hoppers, Mold Set, Stormax PMD150 Stick Inserter, Stacker, Anderson Wrapper Model 691-8-100, S/N 33013, Chocolate Tank & Controls.

(2) Alliance Vitaline 6-Wide Novelty Lines Complete with Flavor Feed Hoppers, Mold Set, Stick Feeders, Stackers, Alliance Wrappers, Mastercraft Model CM Carton Machine, & Controls.

Additional Novelty Items:

(3) Sets of Ice Cream Bar/Popsicle Molds with Racks – 69 ct. – 6-Wide Set, 360 ct. – 8-Wide Set and 393 ct. 8 – 16 Wide Sets. Various Other Additional Mold Sets for 6-Wide Machines, **Check Back for Details!!**

(3) S/S Baggers.

ICE CREAM FREEZERS

WCB 3-Barrel Ice Cream Freezer, Model VP93, S/N 5888, 2001 – Rated at 300 Gal. Per Hour with Allen Bradley PLC Controls with Panelview 1000.

(3) Cherry Burrell VS200 Ice Cream Freezers, S/N 4086, 4087, 4402.

Cherry Burrell Single Barrel Ice Cream Freezer, Model VA150, S/N 5496.

INGREDIENT FEEDERS

(2) Crepaco Model FF Ingredient Feeder, S/N 1967 and 1767.

Additional Cherry Burrell Fruit Feeder:
Vibratory Nut Feeder with Eriez Shaker.



WCB Installation Vitaline 16-Wide Novelty Line



(2) Alliance Vitaline 6-Wide Novelty Lines



Mastercraft Carton Machine



(2) Alliance Vitaline 6-Wide Novelty Lines



Crepaco Ingredient Feeders



Cherry Burrell Ice Cream Freezers

Harry Davis & Company

800.775.2289 harrydavis.com



(5) Tandem Axle Storage Trailers



Edison Vertical Milling Machine



Farm Tanks



(2) Mueller Sugar Tanks



Farm Tanks

Other Additional Material Handling Including: Late Model Autoquip 9,600 lb. Series 35 Hydraulic Platform Scissor Lift, 8'W x 7'9" L; Hydraulic Pallet Jacks; Carts; Racks; Dollies; Aluminum Dock Plates; Maren Hydraulic Baler, Model 204A, S/N 98318.

(5) TRAILERS

(5) Great Dane, Pine, Stoughton, & Budd Tandem Axle Storage Trailers, Up to 40 ft. **Check Back for Details!!**

LAB

Linberg Blue M Hot Water Bath; CEM AVC 80 Microwave; Digital Scales; Hot Plate; Chemical Dispensers; Microscope and More.

MAINTENANCE SHOPS

Maintenance Shop with Bosch Electric Jack Hammer; Edison Vertical Milling Machine, S/N 13897 with Machinist Vise; Dayton 17" Drill Press; Dayton 2-Ton Arbor Press; Double End Grinder; Vises; Workbenches; Tool Box with Various Tools; Burning Cart; Miller Thunderbolt XL Welder; Thermal Dynamics Stat Pak Plasma Cutter; Sewer Machine; Power Tools, Hand Tools and Related.

GENERAL PLANT

Large Assortment of General Plant Items including: S/S Tables, Eyewash Stations, 8' L S/S Wash Troughs, Racks, Rubbermaid Carts, Bug Zappers, Hose Mixing Stations, Portable Stairs; Flow Meters; Chart Recorders; Mettler Toledo Platform Scale; Scott Air Paks with Tanks; 5 Gal. Pails, Garbage Cans; Various Klensade Model T Jr. and Other Portable Foamers; Hand Sanitizers and LC Meters, & More.

SPARE PARTS

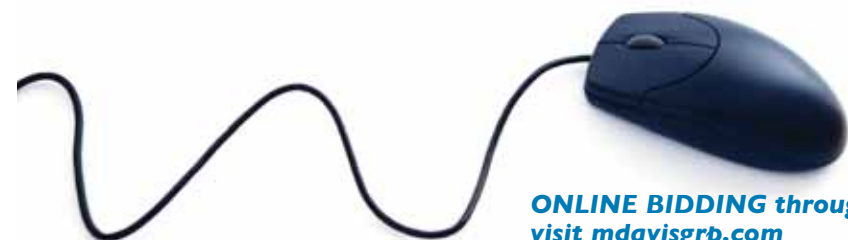
Assortment of Spare Parts Inventory for Most Major Equipment including Homogenizer; Freezers, Novelty Lines, Refrigeration, Sanitary Fittings, Various Spare Motor Inventory from Fractional Up to 125 hp, Bearings, Drive Supplies, & More.

PACKAGING MATERIALS

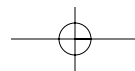
Various Packaging Supplies including: Carton Supplies for Sandwich Machines, Ingredients, Novelty Wrap, and Rolls of 20" W Shrink Wrap, Corrugated Boxes & More.

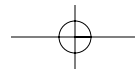
OFFICE FURNITURE

Assortment of Office Furniture including Desks, Steno Chairs, File Cabinets, (12) PC's, & More.



ONLINE BIDDING through BidSpotter
visit mdavisgrp.com





M. Davis Group

412.521.5751 mdavisgrp.com

Additional Air System Components including 9' L x 33" W Horizontal Air Receivers, Filters and Related Items.

Additional Vertical Air Compressor:

MODULAR FREEZER/COOLER

6-Compartment Modular Freezer/Cooler—Most Buildings 7'11" H with Clark and Other Sliding Freezer Doors, I-Beam Construction, Camlock Panels with Bally 3-Fan Freon Blowers with Compressors, **Check Back for Details!!**

BOILERS

Cleaver Brooks Water-Tube Boiler; Model FXL-100, S/N BT004160, Size 250, Pressure 15 ST Capacity, 2,000,000 BTU/HR.

Cleaver Brooks Packaged Boiler; Model M4S-2000, Series 200MG, S/N G12753M4, 15 psi Max. Op 2,000,000 BTU/HR.

American Industrial 8 ft. L Shell and Tube Heat Exchangers.

Water Softening System.

S/S PIPE, PUMPS & LINE ITEMS

Positive Pumps: (3) Waukesha Model 022IC2 Positive Displacement Pumps; G & H Model GHP432 Positive Displacement Pump; Waukesha Size 10 Portable Ripple Pump.

Centrifugal Pumps: Over (50) Centrifugal Pumps—Most ¾ hp and Up to 5 hp, Manufactured by Thomsen, Tri-Clover and Others.

100's of Feet of Installed S/S Piping 1.5 on Up Throughout Facility Including Flovter Stations, Valving, Sanitary Fittings & More.

MATERIAL HANDLING

(2) TCM 25-5,000 lb. Gas Forklifts with Pneumatic Tires, Model FG25N5T, S/N A31T8475 and 59485—130' 2-Stage Mast.

Nissan 4,300 lb. Gas Forklift, Model PH02A25VP50, S/N 903724—187" 3-Stage Mast.

(4) 2001 Jungheinrich Electric Pallet Jacks, Model EFGDH15, Model EJE120 and (2) Model ELE20 with 24 Volt Chargers.

(3) Mitsubishi 4,000 lb. Electric Pallet Jacks, Model PMW20 with 24 Volts Chargers.

500 Gal. Gasoline Tank with Agway Electric Pump and Containment, (For Refueling Forklifts).



Cleaver Brooks Boiler



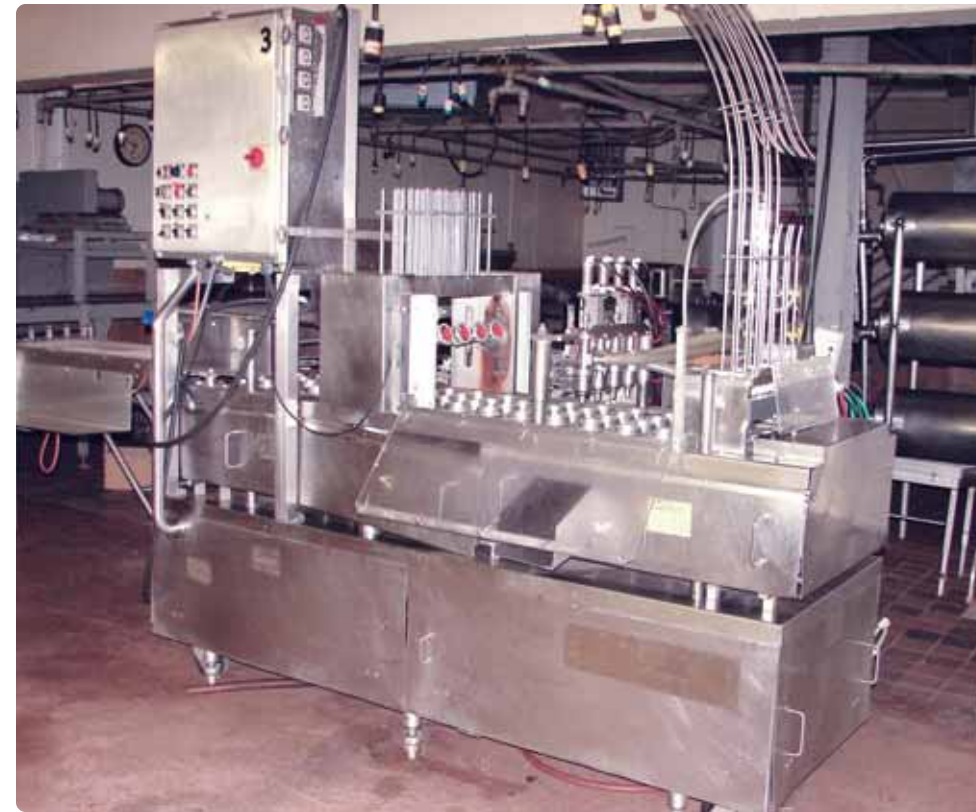
TCM Gas Forklift



Mycam & Crepaco Ammonia Compressors

Harry Davis & Company

800.775.2289 harrydavis.com



Modern 4-Lane Cup Filler



Flavor Tanks



Cherry Burrell 3-Compartment Flavor Tanks



Cherry Burrell 3-Compartment Flavor Tanks

FILLERS

2002 Modern 4-Lane Cup Filler, Model SL-IX4, S/N MP-261 with Allen Bradley Micrologics 1000 PLC Controls.

2000 Burghoff 2-Lane Cup and Cone Filling Line with Electric Cam Plus 6000 Series PLC Controls and 2-3/4" W Molds.

Anderson Pint Filler, S/N 17185 and (3) Additional Anderson Fillers for Pints & Half Gal.

Huhtamaki Ice Cream Bulk Can Former, Model FM-1800-ABA, S/N QF/942-1.

(7) FLAVOR TANKS

Cherry Burrell 3-Compartment at 300 Gal. Insulated Flavor Tank with Agitators, Valves and Pumps—Each Compartment 4' W x 37" W x 43" Deep.

Cherry Burrell 3-Compartment at 125 Gal. Insulated Flavor Tank, Model UAMS375R with SEW Drives, Agitators, Valves and Pumps—Each Compartment 34" W x 27" W x 26" Deep.

3-Compartment Insulated Flavor Tank with Contour Bottom—Each Compartment 36" W x 34" W x 33" Deep.

(3) Cherry Burrell 3-Compartment Mix Tanks, Model UAMS-375R, S/N 103, 63 and 158 with Agitators, Valves and Pumps—Each Compartment 36" W x 26" W x 34" Deep.

Cherry Burrell 2-Compartment at 100 Gal. Insulated Flavor Tank with Contour Bottom, Agitators, Valves and Pumps—Each Compartment 30" W x 24" W x 37" Deep.

PROCESSORS & MIX TANKS

Approx. 600 gal. Dome-Top Processor, (45" H x 63" W).

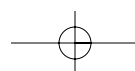
Approx. 500 gal. Dome Top Processor, (40" H x 66" W).

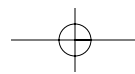
Approx. 500 gal. Dome-Top Processor, (54" H x 56" W).

Damrow 200 Gal. Hinged Lid Jacketed Mix Tank, Model MV200, S/N 114888.

Additional Tanks

50 Gal. and 100 Gal. Univats with Agitators and Valves; Additional Portable S/S Tanks Some with Pumps.





M. Davis Group

412.521.5751 mdavisgrp.com

MIX SYSTEMS WITH HOMOGENIZER

700 Gallon Per Hour APV Mix Press System, with Press Model HX, S/N 15009, Complete with (1) Divider; (116) Plates, Circulating System, Holding Tube Set, Valves, Pumps and Controls.

2002 APV Homogenizer, Model APV24-2.5P, S/N 20022410533.

(2) LIQUIFIERS

Breddo 300 Gal. S/S Liquifier, Model LDT, S/N D68917393016 with 40 hp Motor.

Breddo 150 Gal. Single Shell Liquifier, Model LDT, S/N D34871-298546 with 20 hp Motor.

SPIRAL HARDENING SYSTEM

Northfield Dual Spiral Hardening Tunnel, Job S/N 2206, Complete with 36" Belt W x 12" to 14-1/2" H Spacing, Additional Specs.

Including Range Steel Omniflex Small Radius G1 with Double Bar; Toshiba Variable Speed Controls, Cage Drive 5 hp with 733.3 – Tension Drive 2 hp at 60 to 1 – Complete with Surrounding Modular Building Blueprint Approximately 23' W x 52' L x 17' H.

Hardening Refrigeration Package Including (2) Frick 150 hp Screw Ammonia Compressors, Model RWB1160, S/N S0184HFMCLHAA3 and RWB1160, S/N S0183HFMCLHAA3, King 4-Fan Blowers, Accumulators, Circulating System and Controls.

LIQUID SWEETENER TANKS

(2) 1998 Mueller 6,000 Gal. Vertical All S/S Liquid Sweetener Tanks, Model D, S/N 204307-2 and 307-1 with Pumps, Bottom Man Doors, Tutill and Roper 5 hp Sugar Pumps and LC Meters.

6,000 Gal. Horizontal Tank with Epoxy Line and 5 hp Sugar Pump.

S/S TANKS

Over (5) Horizontal S/S Tanks, Up-to 3,000 Gallon, Some with Jackets, & S/S Fronts, Complete with Agitators, Valves, **Check Back for Details!!**

FARM TANKS & OTHERS

Mueller 1,000 Gal. Oval Storage Tank, Model OE, S/N 32758A.

(2) Mojonner Round and Oval Storage Tanks with Agitators – 7' x 34" W x 37" Deep and 9' L x 46" W x 41" Deep.



Mix Press System



APV Homogenizer



Northfield Dual Spiral Hardening System



Breddo 300 Gallon S/S Liquifier

Girton Round Storage Tank – 8' L x 4' W x 44" Deep.

(9) Sunset & Other Assorted S/S Jacketed & Other Farm Tanks in Various Sizes Including – (2) 80" L x 48" W x 28" Deep; (3) 6'3" L x 48" W x 33" Deep; 7' L x 4' W x 33" Deep; 8' L x 4' W x 33" Deep; 57" W x 8' L x 53" Deep, and 5' L x 56" W x 36" Deep.

PACKAGING

2002 Wepackit Case Erector, Model 720XLM, S/N 720XLM-2125 with S/S Frame Construction.

(3) Mastercraft CM5 Carton Machines with Glue Systems and (1) Additional Mastercraft Boxer (Parts Machine).

Shrink Tunnel with Wrapper and Additional Great Lakes Shrink Tunnel with 30" W x 16" H Opening.

Pack-Off S/S Product Conveyor System Complete with 38" W Plastic Chain, with Hytrol Power Product Conveyor with Drives, Combiners and Related Items.

(2) Kwik-Lok Bag Closing Machines, Model 865A-AKNRPR, S/N 63909-2000 and Model BGJNRPL, S/N 71736-2003.

Harry Davis & Company

800.775.2289 harrydavis.com



(2) Ingersoll Rand 30 hp Air Compressors



Glycol System



Late Model Frick Ammonia Compressor



Frick Evaporative Compressor



Ice Builders

Wulftec Pallet Stretch Wrapper, Model WLP-200, S/N 3252-1-0402.

(5) Various Case Sealers Some with Micro-Jet Printers.

Metal Detector with 14" W x 12-1/2" W Opening.

REFRIGERATION SYSTEM

Compressors:

2004 100 hp Screw Ammonia Compressor, Model TDSL193L024DD with Ram Starter.

(3) Frick 50 hp and 60 hp Screw Ammonia Compressors, Model RXF24, S/N S0021LFMNLHAA3.

Evapco Evaporative Condenser, Model PMCA-200, S/N 928682.

(3) Imeco Evaporative Condensers, Models XLC 155, S/N 15124-1 RH and XLC 58, S/N 8403-1 RH.

Ice Builders:

(3) Ice Builders including (1) Ammonia and (2) Freon Operated with Circulating Systems – (1) 8'4" L x 76" W x 6'3" H; (1) Chester Jensen Type M8-10-15, S/N 1157 – 16'8" L x 7'2" H x 5'7" W.

All Additional Ammonia System and Circulating System Components including Receivers, (2) Hansen Auto Purgers, Model M, Valves, Pumps, Controls and Related.

Glycol System including (2) Refrigeration Plate Presses including Glycol Chiller – 1998 Type MK15-BWFD, S/N 30104-93173.

AIR COMPRESSORS

1995 Ingersoll Rand 60 hp Screw Air Compressor, Model SSR-EP60, S/N F14836U95257, Rated at 125 psi with Intellisys Controls.

(2) 1999 Ingersoll Rand 30 hp Screw Air Compressors, Model SSR-E-P-30, S/N JX0906U99319 and JX0905U99319 – 125 psi max. with Intellisys Controls.

(2) Zeks Compressed Refrigerated Air Dryers, Model 250HSEA-400, S/N 13217 and Model 250HSEA500, S/N 95910-3 with Digital Controls.

(2) Frick Approximately 75 hp Screw Ammonia Compressors, Model XJF120S10326DD.

(2) Frick Screw Ammonia Compressors, Model RWB1160.

(2) Creamery Package 4 & 6 Cylinder 30 hp and 40 hp Ammonia Reciprocating Compressors & Other Additional Compressors.

(2) FES 4-Cylinder 40 and 50 hp and Creamery Package 6-Cylinder 30 hp Ammonia Booster Compressors.

Condensers:

Late Model Frick Evaporative Condenser, **Check Back for Details!!**

